
TAU-II™

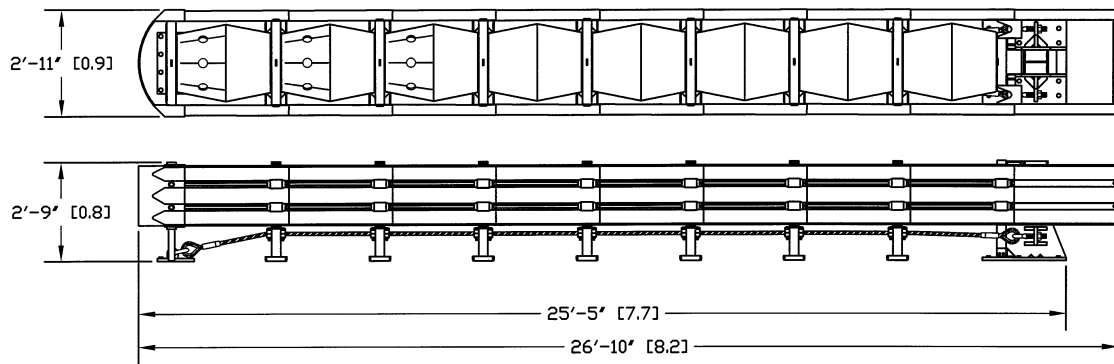
Family of Crash Cushions

Fully Redirective and Non-Gating



The TAU-II™ system consists of a full line of crash cushion products which have been tested to meet the rigorous requirements of NCHRP Report 350, Test Levels 2 and 3. The systems will be provided in lengths and with capacities for both low speed and high speed applications.

The TAU-II™ system is fully redirective and non-gating, and it is ideally suited for narrow hazards such as the ends of rigid barriers, tollbooths, utility poles and more. Ease of installation, numerous transition options, low maintenance requirements, and reusability of system components make the TAU-II™ system ideal for treating most roadside hazards.



TAU-II™ Redirective, Non-Gating Crash Cushion
(Plan and Elevation Views—8 Bay (100 km/h) System)

General Product Specifications:

- Performance – NCHRP Report 350, Redirective, Non-Gating Crash Cushion System designed for attachment to Permanent or Portable Concrete Barrier
 - Eight Bay System (Shown) - Approximately 8 meters (26 feet) in length
 - Tested to NCHRP Report 350, Test Level 3 (100 km/h)
 - Edge of road and narrow median applications
 - Simple installation with several foundation options
 - Apply to point hazards or to longitudinal barriers
 - Many transition options
 - Four Bay System—Approximately 4.3 meters (14 feet) in length
 - Tested to NCHRP Report 350, Test Level 2 (70 km/h)
 - Shorter version but the same characteristics as the 8 Bay system
 - Material Characteristics
 - System Dimensions (width and height)
 - Width—Approximately 0.9 meters (2.9 feet)
 - Height—Approximately 0.8 meters (2.8 feet)
 - Weights:
 - 8 Bay System – Approximately 1380 kg (3050 pounds)
 - 4 Bay System – Approximately 910 kg (2010 pounds)
 - Materials:
 - Steel Elements – Galvanized in accordance with ASTM 123
 - Plastic Components - High Molecular Weight Polyethylene
 - Stabilized and formulated for long term outdoor use

For additional information contact:

Barrier Systems, Inc.
180 River Road
Rio Vista, California 94571
Phone: 1 (888) 800-3691
Facsimile: 1(707) 374-6801